

GRAND PRIX F1 MONACO VIP HOSPITALITY WEEK END

WATCH THE RACE FROM THE PRIVATE TERRACE

ABOVE THE STARTING GRID

ABOVE THE PRINCE OF MONACO OFFICIAL LODGE

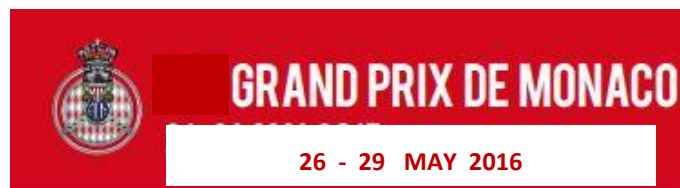


26 – 29 MAY
2016



SEVERAL RACES TO ATTEND THE UNEXPECTED





3 DAYS OF SPORTING EXITMENT CLOSE TO THE CARS AND THE RACES

JEU/THU	26.05
6:00	Fermeture du circuit / <i>Track closed</i>
8:30 - 9:15	Formula Renault 3.5 Séance d'essais / <i>Practice session</i>
10:00 - 11:30	Formule 1 1 ^{ère} Séance d'essais / <i>1st Practice session</i>
12:00 - 12:45	GP2 Séance d'essais / <i>Practice session</i>
14:00 - 15:30	Formule 1 2 ^{ème} Séance d'essais / <i>2nd Practice session</i>
16:15 - 16:55	GP2 Essais qualificatifs / <i>Qualifying session</i>
17:30 - 18:15	Porsche Supercup Séance d'essais / <i>Practice session</i>
19:30	Ouverture du circuit / <i>Track open</i>

VEN/FRI	27.05
7:00	Fermeture du circuit / <i>Track closed</i>
9:45 - 10:15	Porsche Supercup Essais qualificatifs / <i>Qualifying session</i>
11:15 - 12:20	GP2 Départ de la 1 ^{ère} course / <i>1st race start</i> (42 tours/laps ou/or 60mn)
14:00	Ouverture du circuit / <i>Track open</i>



SAM/SAT	28.05
7:00	Fermeture du circuit / <i>Track closed</i>
9:00 - 9:25	Formula Renault 3.5 Série A Essais qualificatifs / <i>Qualifying session</i>
9:30 - 9:55	Formula Renault 3.5 Série B Essais qualificatifs / <i>Qualifying session</i>
11:00 - 12:00	Formule 1 3 ^{ème} Séance d'essais / <i>3rd Practice session</i>
14:00 - 15:00	Formule 1 Essais qualificatifs / <i>Qualifying session</i>
16:10 - 17:00	GP2 Départ de la 2 ^{ème} course / <i>2nd race start</i> (30 tours/laps ou/or 45mn)
18:30	Ouverture du circuit / <i>Track open</i>

DIM/SUN	29.05
7:00	Fermeture du circuit / <i>Track closed</i>
9:45 - 10:20	Porsche Supercup Départ de la course / <i>Race start</i> (16 tours/laps ou/or 30mn)
11:10 - 11:55	Formula Renault 3.5 Départ de la course / <i>Race start</i> (40mn + 1 tour/lap)
12:30	Formule 1 Parade des pilotes / <i>Drivers track parade</i>
14:00	Formule 1 Départ du / <i>Start of</i> 73^E Grand Prix Automobile de Monaco (78 tours/laps ou/or 2h)
19:30	Ouverture du circuit / <i>Track open</i>

ub de Monaco n'accepte aucune responsabilité en cas de changement de
ity for changes in calendar.

THE ONLY RACE IN TOWN ... UNIQUE WORLDWIDE ... AN IMPRESSIVE ORGANIZATION



3km340
Longueur du circuit / Length of the circuit

305km/h
Vitesse de pointe / Top speed

260,52km
de distance / 78 tours / laps

120
Pompiers professionnels / Professional fire men
3 véhicules de désincarcération et d'extraction / disincarceration and extraction vehicles
7 véhicules d'intervention rapide incendie / fire express vehicles

9
Grues / Cranes
Virage Sainte Devote
Haut avenue d'Ostende
Square Massenet
Avenue des Spilluges
Echappatoire virage Mirabeau
Virage Sun Casino
Sortie échappatoire Chicane
Sortie "S" Piscine
Rue Suffren Reymond

500
Extincteurs / 1 tous les 15 mètres
Extinguishers / 1 each 15 meters

220
Postes émetteurs/récepteurs
Radio-walkies

9 réseaux radio / Radio networks

3000
Pneus de protection / Protection tyres

23km de rails de sécurité / safety rails

700 m de barrières / barriers Tagora®

20 000 m² de grillage / wire netting

1100 tonnes de tribunes / grandstands

16 Virages / Bends
6 à gauche / on the left
10 à droite / on the right

39
Caméras de surveillance / Cameras to supervision

650 Commissaires / Marshals

43 postes d'interventions / intervention stations

2 postes d'interventions réduits / reduced intervention stations

ÉQUIPEMENT MÉDICAL / MEDICAL EQUIPMENT

- 3 Postes Médicaux Avancés (P.M.A.) / advanced medical stations
- 3 Structures hospitalières (centres médicaux) / hospital structures (medical center)
- 35 Médecins-réanimateurs / resuscitators
- 35 infirmières / first aid nurses
- 3 véhicules d'intervention médicalisés / express intervention vehicles
- 3 véhicules d'intervention pour la désincarcération et l'extraction / disincarceration and extraction vehicles
- 36 valises de réanimation cardio-vasculaire et respiratoire / cardiovascular and breathing resuscitation kits
- 30 matelas à dépression / depression mattress
- 17 Médecins / doctors
- 40 Secouristes / first aid workers
- 18 ambulances / ambulances
- 6 appareils de contention K.E.D. / K.E.D. vertebral and spinal immobilizing plaster
- 2 hélicoptères / helicopters



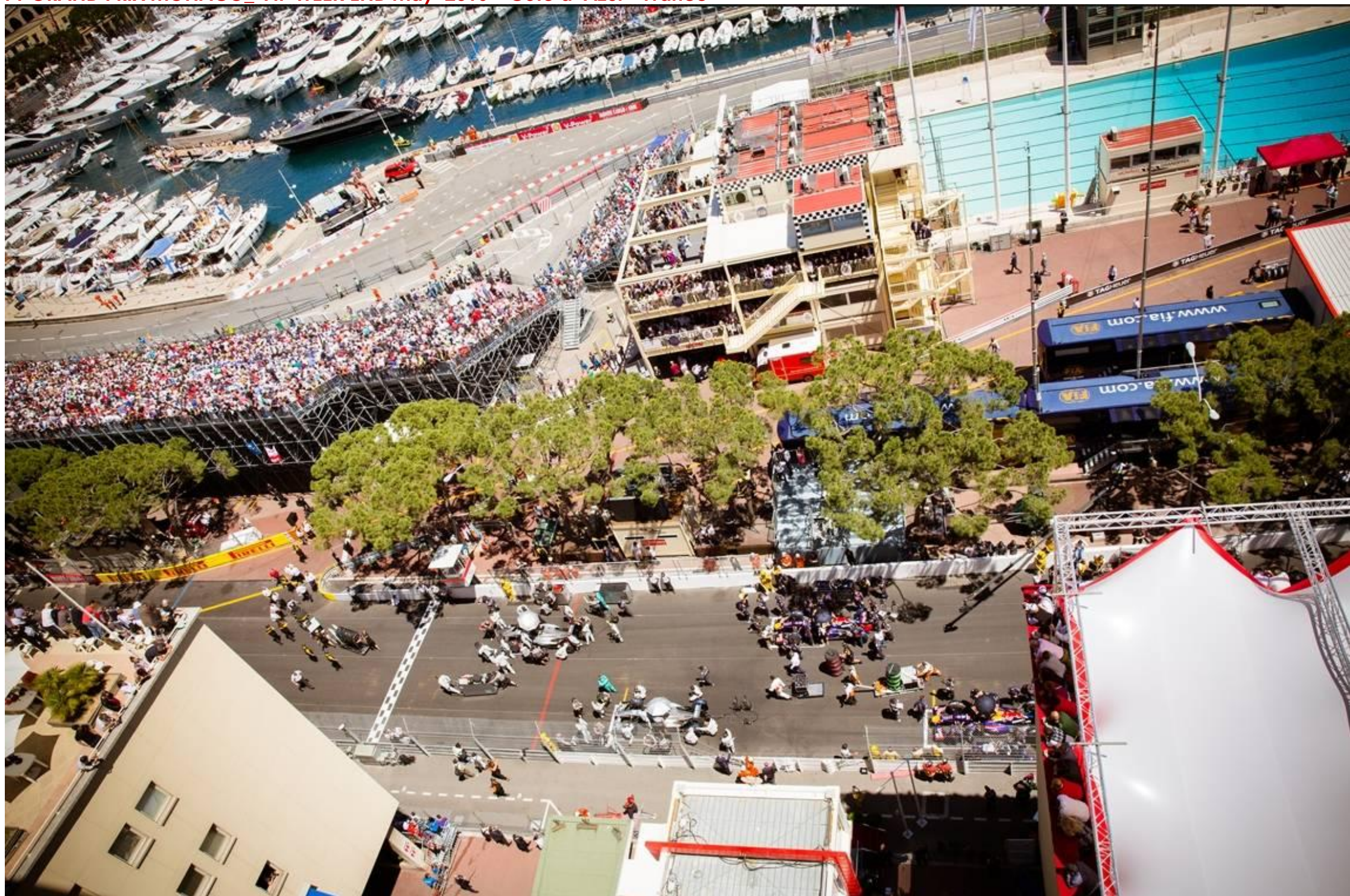
GUESTS ENJOY A PRIVATE APARTMENT TERRACE AND SHARE WITH FRIENDS TOGETHER WITH A CHAMPAGNE BAR & CHEF CATERING BUFFET

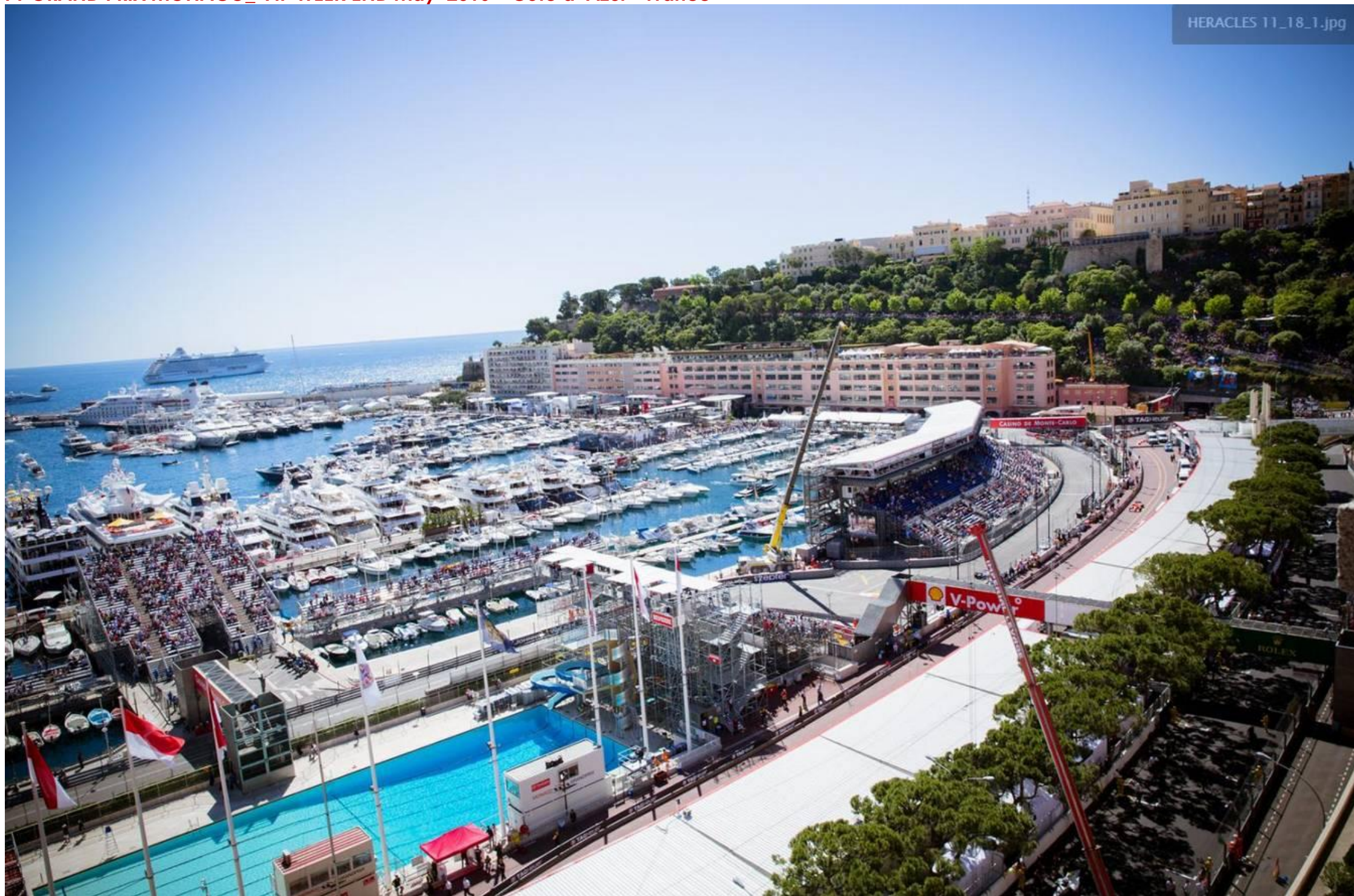


HERACLES 11_9_1.jpg







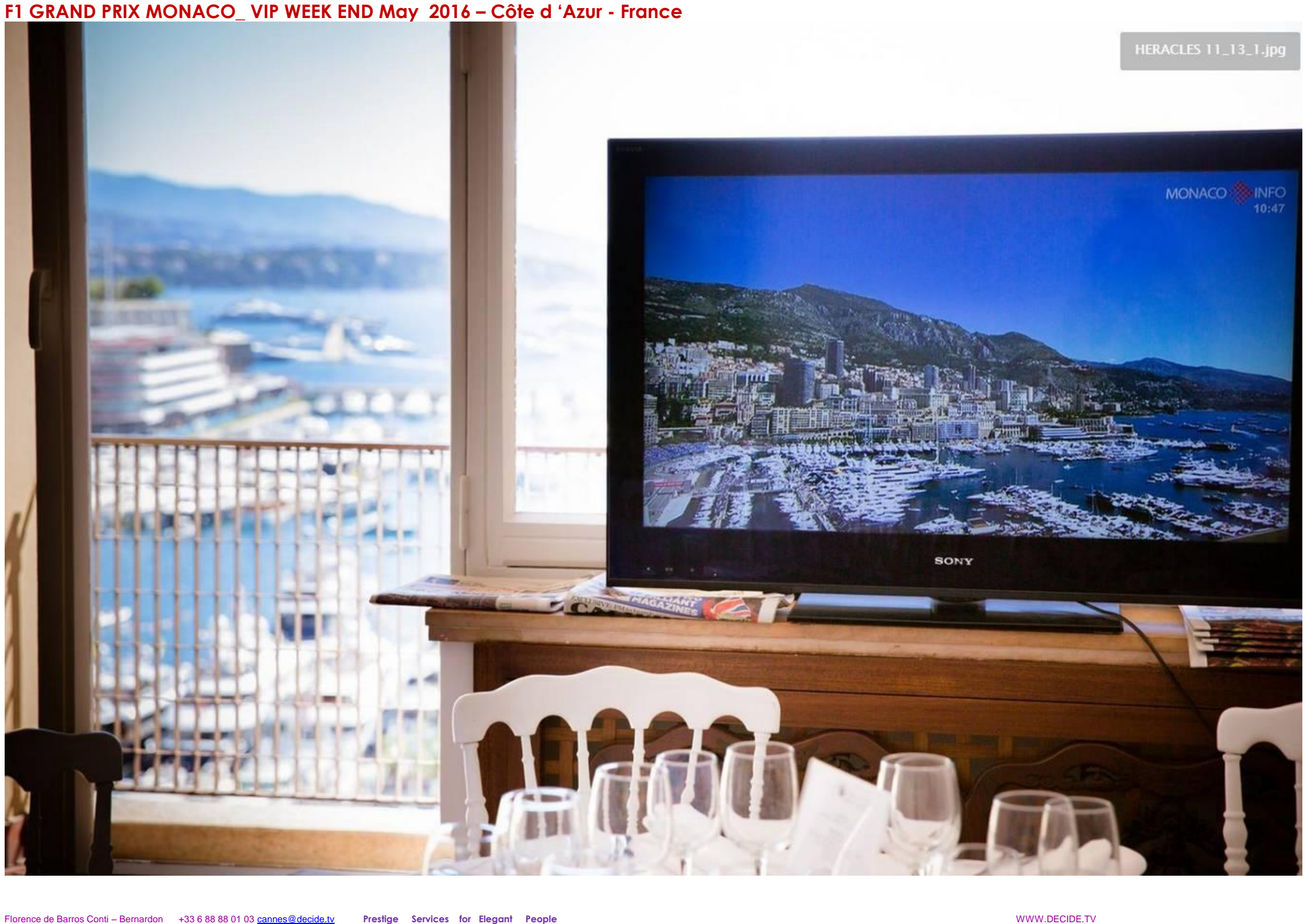






ONE OF THE PRIVATE TERRACE AT THE 11TH and at the 13TH FLOOR OF PALACE HERACLES ABOVE THE STARTING BLOCK DEPARTURE





**THE VIEW FROM YOUR PRIVATE APARTMENT FOR THE F1 GP MONACO
15 GUESTS AT THE 11TH and 15 GUESTS at the 13TH FLOOR OF PALACE HERACLES**

The Heracles Palace is situated right above the starting line and HRH the Prince Albert of Monaco Official Lodge
It offers a panoramic view of 70% of the track in front of the paddock exit and the wide screen
At the end of the raceo follow the cup giving by the Prince family.
Definitely the most beautiful place and the most astonishing view of this legendary F1 Grand Prix

YOUR Private terrace INCLUDES :

- VIP pass for Saturday and/or Sunday
- Hostess welcome
- Catering breakfasts and lunches served at your private table
- Fine wines and coffee
- Open bar with alcohol, soft drinks
- Champagne
- Official program, magazines,
- Newspapers, TV network
- Catering staff
- The management Staff



2016 A SPECIAL YEAR & SPECIAL GUESTS

Saturday 28th - Sunday 29th May 2016



26 – 29 MAY
2016